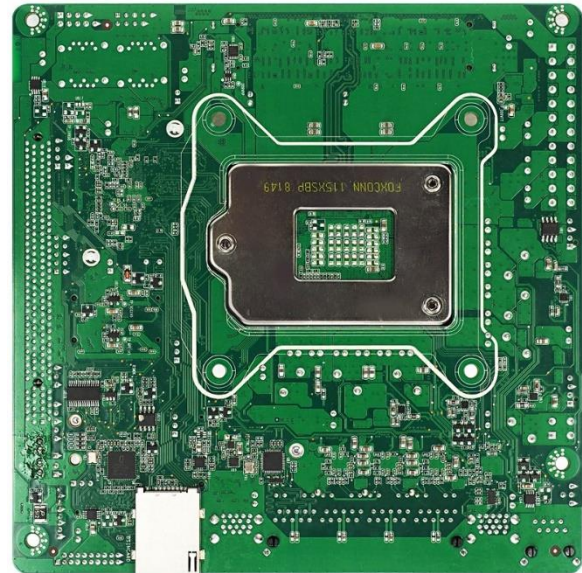
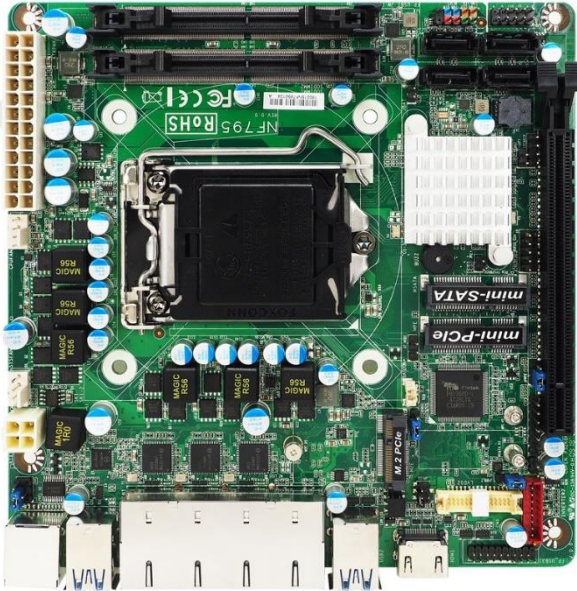


JNF795-Q170

Slim Mini-ITX Embedded Motherboard with Intel® LGA 1151 Socket Core™ i3, i5, i7 & Pentium Processors (Max. 65W), DDR4 up to 32GB, support 4 * Intel GbE



Overview

The JETWAY JNF795-Q170 are Slim Mini-ITX form factor board adopts the Intel® 6th & 7th generation Core i7/i5/i3, Pentium and Celeron Processor. The board supports two SO-DIMM DDR4 2133Mhz memory, up to 32GB. Featuring the integrated Intel® Gigabit Ethernet controller, the JNF795-Q170 offers four 10/100/1000Base-TX Ethernet devices for network transmission. four SATAIII (6Gb/s) interface and one mSATA offer storage devices. One Mini PCIe interface, one M.2 (2230, E-key), six USB3.0 ports, two USB2.0 ports and one COM port provide versatile expansion. The PCIex16 slot can support Jetway riser card for different expansion. The JNF795-Q170 offers 4 * Intel GbE which can support more networking appliance. Because of the above features, JNF795-Q170 is one of the best selections for Networking applications.

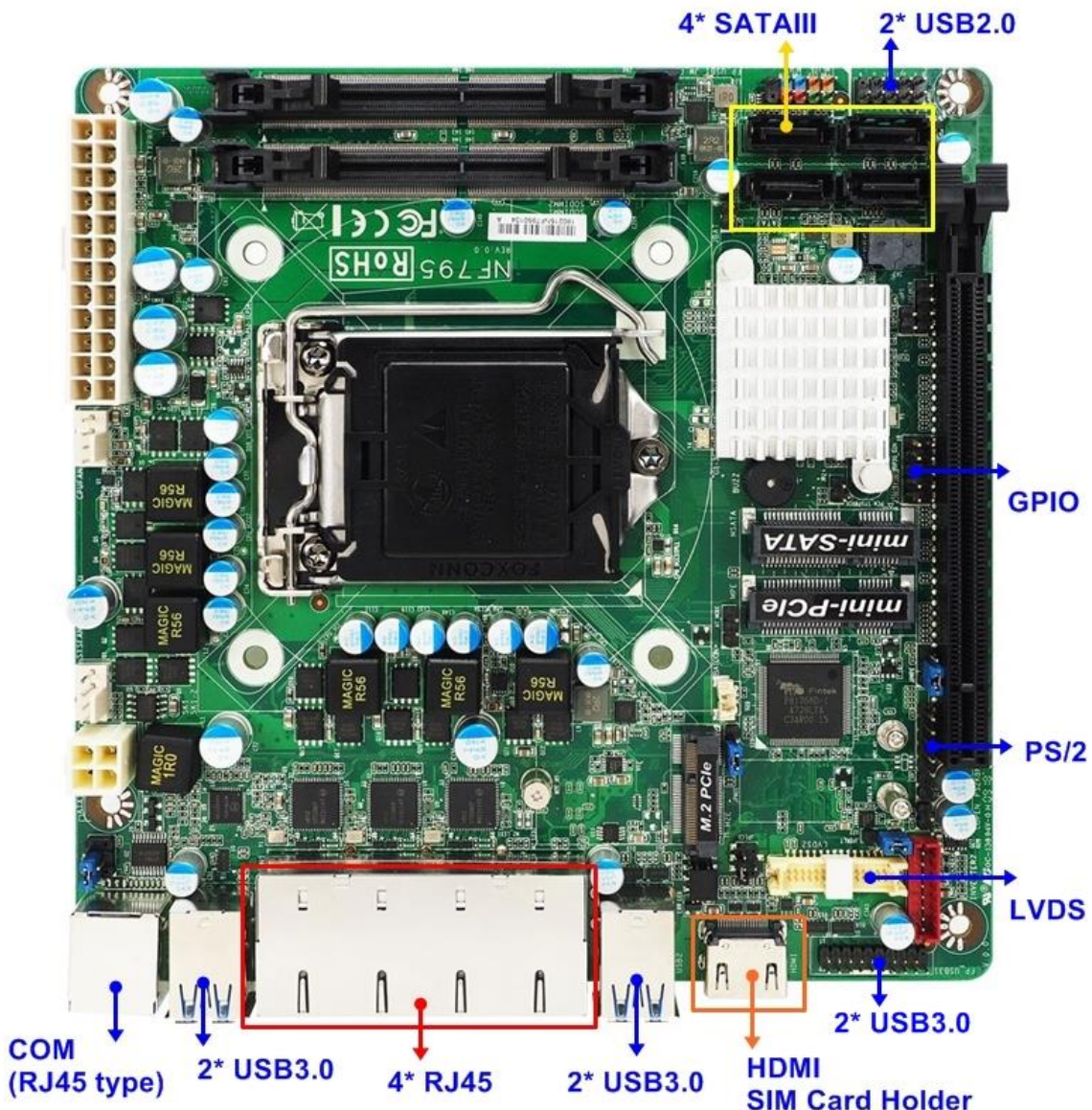
Features

1. Intel® 6th & 7th generation Core i7/i5/i3, Pentium and Celeron Processor (Max. 65W TDP).
2. 2 * DDR4 SO-DIMM up to 32 GB
3. 4 * 10/100/1000 Base-TX Ethernet Ports
4. 1 * HDMI, 1 * 24-bits Dual CH LVDS
5. 1 * COM(RJ45 type), 6 * USB3.0 & 2 * USB2.0
6. 1 * PCIe x16 slot, 1 * mSATA (full size) , 1* Mini PCIe slot (half size), 1 * SIM card slot, 1 * M.2 (2230, E-key)
7. 4 * SATA III (6Gb/s) support RAID 0, 1, 5, 10
8. Support TPM1.2/2.0 (on board option)

Application

- Networking Appliance
- POE/Surveillance
- I.O.T

Internal Diagram



Specifications

Form Factor

Dimensions - Slim Mini-ITX (6.7-in * 6.7-in, 170 * 170mm)

Processor System

CPU	- Intel® 6th & 7th generation Core i7/i5/i3, Pentium and Celeron Processor (Max. TDP 65W)
Core Number	- (by CPU)
Max Speed	- (by CPU)
L2 Cache	- (by CPU)
Chipset	- Intel Q170 Express chipset
BIOS	- AMI 128Mb Flash ROM

Expansion Slot

PCI	- 0
Mini-PCIe	- 1 (half size)
mSATA	- 1 (full size)
PCIe	- 1 (PCIex16 slot)
M.2	- 1 (2230, E-key)
CFast Card Socket	- 0
CF Card Socket	- 0
SIM Card slot	- 1

Memory

Technology	- Dual Channel DDR4 2133MHz SDRAM
Max.	- 32GB
Socket	- 2 * SO-DIMM

Graphics

Controller	- Intel® HD Graphics
VRAM	- Shared Memory
VGA	- 0
LVDS	- 1 (Max. Resolution: 1920x1200@60Hz)
eDP 1.3	- 0
HDMI 1.4	- 1 (Max Resolution : 4096x2304@24Hz)
DVI-D	- 0
DisplayPort	- 0
MultiDisplay	- Dual Displays

Ethernet

Ethernet	- 10/100/1000 Mbps
Controller	- 1 * Intel i219LM + 3 * Intel i211AT GbE

Connector	- 4 * RJ45
Audio	
CODEC	- N/A
Channel	- N/A
SATA	
Max Data Transfer Rate	- 4 * SATAIII support RAID 0, 1, 5, 10
Rear I/O	
VGA	- 0
DVI-D	- 0
HDMI	- 1
DisplayPort	- 0
Ethernet	- 4
USB	- 4 * USB 3.0
Audio	- 0
Serial	- 1 (RJ45 type)
SIM card slot	- 1 (bottom side)
eSATA	- 0
PS/2	- 0
DC-input	- 0
Internal Connector	
USB	- 2 * USB3.0, 2 * USB 2.0
PS/2	- 1
LVDS / inverter	- 1
eDP	- 0
VGA	- 0
Serial	- 0
SATA	- 4 * SATAIII
mPCIe	- 1 (half size)
mSATA	- 1 (full size)
M.2	- 1 (2230, E-key)
GPIO	- 1 (8 bit)
Chassis intrusion	- 1
Audio Header	- 0
SMBUS/ I2C	- 0
AT mode	- 1
TPM	- 1 (on board option)
Other	- 0

Watchdog Timer	
Output	- From Super I/O to drag RESETCON#
Interval	- 256 segments (10sec ~ 255min)
Power Requirements	
Input PWR	- ATX PWR (4+24 pin)
Power On	AT/ATX Supported - AT: Directly PWR on as Power input ready - ATX: Press Button to PWR on after Power input ready
Certifications	
Certifications	- CE, FCC, LVD, RoHS, REACH
Environment	
Temperature	- Operating: 0°C ~ 60°C
	- Storage: -20°C ~ 85°C
Warranty	
Warranty	- 2 Years Limited Warranty
Packing	
Packing	- Net Weight: - Gross Weight: - Color Box dimension:

*Specifications subject to change without notice, not responsible for typographical errors. Does not include HDD or OS.

Accessories

Part Number	Description
	JNF795 M/B
F04-MB-065-F F04-MB-066-F	I/O shield
G01-SATA3-BL-1F	SATA cable

Mechanical Drawings (Unit = mm)

